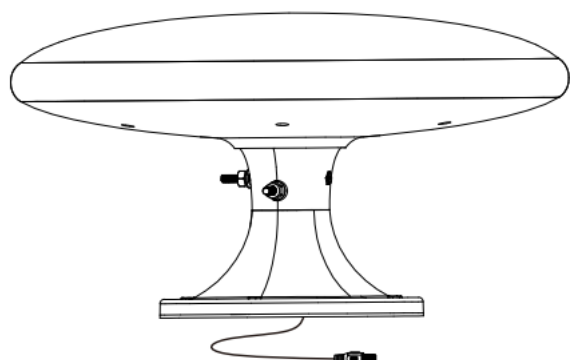


首页

USER MANUAL

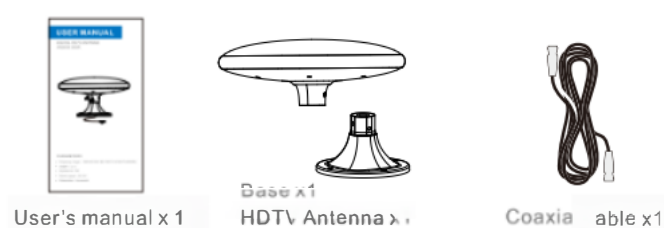
DIGITAL HDTV ANTENNA
AN5005-008R



PARAMETERS

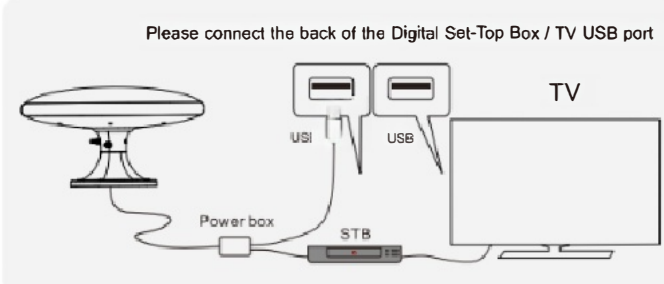
- Frequency range: FM/VHF/UHF 88-108/174-230/470-862MHz
- VSWR: ≤ 2.0
- Impedance: 75 Ω
- Power supply: DC 5V
- Polarization: Horizontal

Package contents



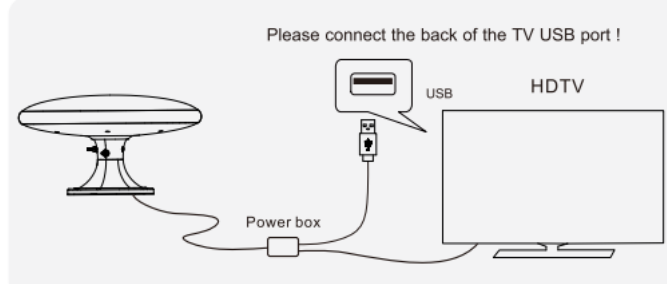
Antenna Connection

※ Connect to Set-Top box(STB)

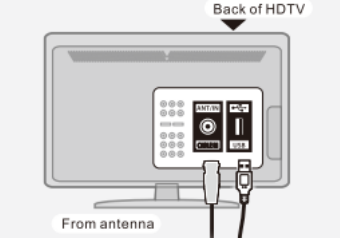


- The coaxial cable connects to the antenna and the power box.
- Connect coaxial cable or power box to the ANT/IN or CABLE IN port or the back of TV/STB.
- Plug the power box's USB connector into an open USB port on the back of TV/STB to ensure amplifier works properly.

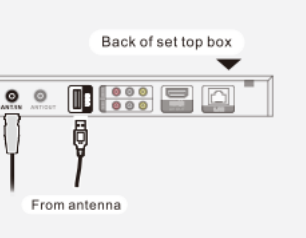
※ Connect directly to HDTV



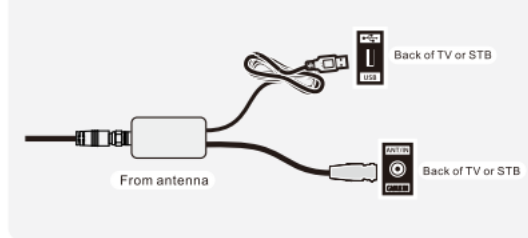
Connect to HDTV



Connect to STB



Power supply selection



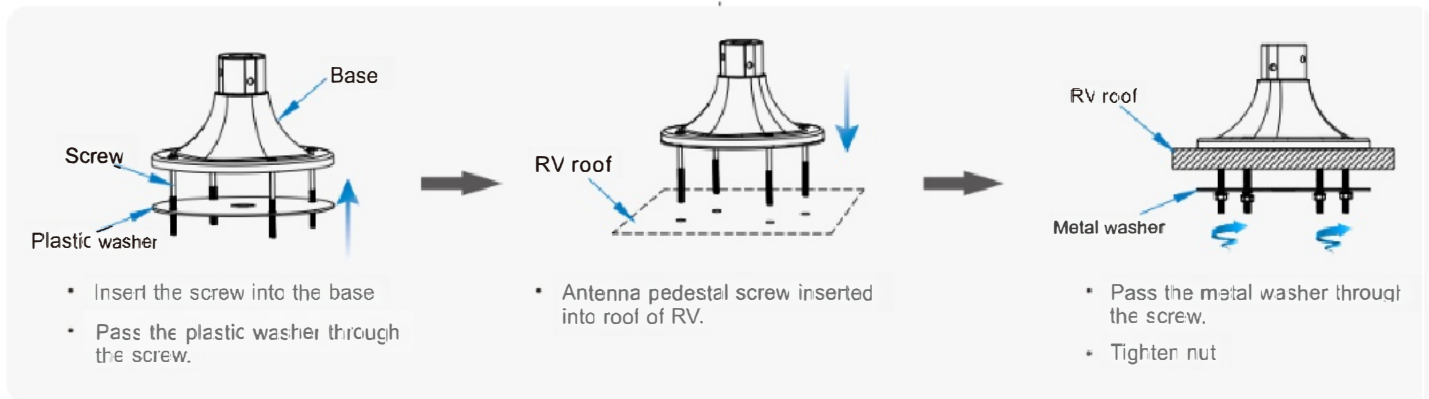
Tips for using antenna

- Please connect the antenna and TV first, then find a good signal place before fixing the antenna.
- Placing the antenna in a higher and open place to search for better signals
- Keep the antenna away from metal objects, which will affect the antenna's signal reception
- If you are the one who first time to use the digital TV antenna, please check the following:
 - Please confirm whether your TV is a digital TV, if not, please have a set-top box. If your TV has digital signal input or the TV has a wireless TV antenna port, it means it is a digital TV.
 - Please make sure that the antenna is correctly connected to the port of the TV or set-top box.
 - some TVs have ports for wireless and wired antennas.
 - some set-top boxes have input and output ports, which must be connected to the input port.
 - If it's a digital TV, please choose Digital Signal or corresponding antenna input port when you are having the TV setting

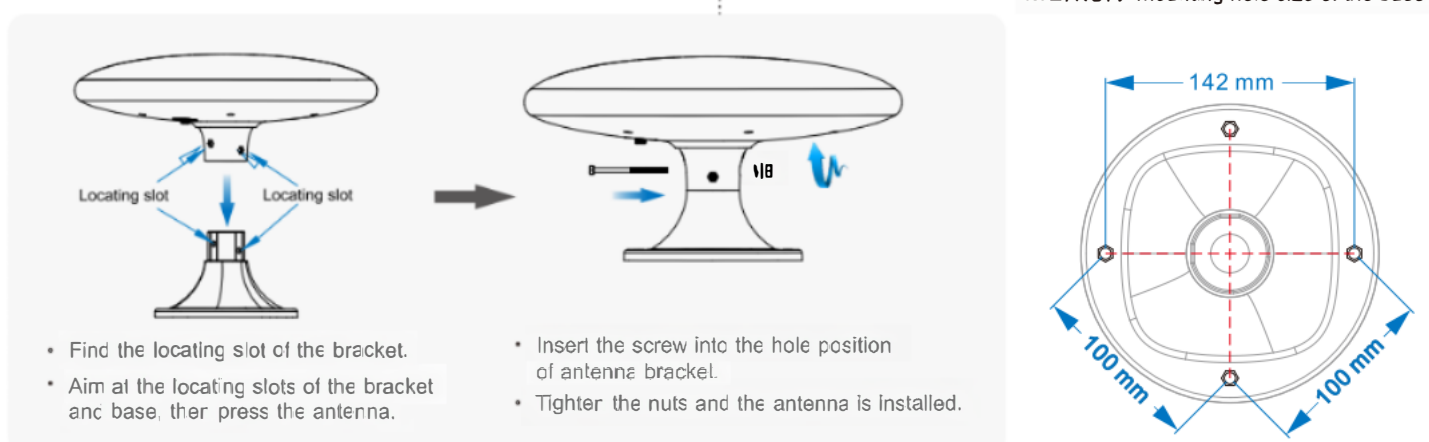
IMPORTANT: For some channels you might get better performance with the antenna in a different position or facing a different direction. Sometimes just a little bit of adjustment can make a difference!

Antenna installation

Step1 :Install the antenna base to the RV roof



Step2 :Install the antenna to the antenna base



Scan for Channels

- In the TV's setup menu, set the mode to Antenna or Air. Refer to the TV manual for detailed instructions.
- While in the TV's setup menu, set TV to scan for channels. This can sometimes be listed as auto-program channel search or channel scan. Consult your TV manual for detailed instructions.
- You must perform a channel scan to receive any channels!

Troubleshooting

- Check to make sure you have correctly connected the antenna to your HDTV or third-party HD receiver.
- Reposition the antenna in a different location. Maybe higher or a wall or close to a window? Facing the direction of the broadcast tower is usually best. Signal strength will vary based on certain conditions. Distance from the tower, hills, buildings and even tall trees can impact reception. Always re-scan for channels after moving the antenna.
- If a channel is missing, try turning the antenna 10 or 20 degrees in either direction to avoid reflection or move the antenna, and then re-scan the channel.
- The picture or sound freezes while I am watching a channel or there are box weak or intermittent signal. Try moving the antenna to a different location or aiming it in the direction of the broadcast tower for that channel.
- Not all digital signals are High Definition (HD). Make sure you are using a High Definition Television (HDTV) with built-in ATSC tuner. When connecting the antenna to a third-party receiver, make sure it is capable of receiving HD. Otherwise no HD channels can be picked up.

FAQ

- Q: Will all the channels I receive be High Definition (HD)?**
A: Not all digital signals are High Definition(HD). Make sure you are using a High Definition Television(HDTV) with built-in ATSC tuner. When connecting the antenna to a third-party receiver, make sure it is capable of receiving HD. Otherwise no HD channels can be picked up.
- Q: Can you put the antenna behind the TV?**
A: Yes, but it may not be the ideal location for the antenna. The TV will block some of the signal, which will weaken the signal.
- Q: Are channel lineups available?**
A: No. The channels you can receive depend on many complex factors such as distance to the transmitting antennas, your height above ground, the compass reading, trees blocking a clear view, etc. The good news is that once you use scan function of your TV you will see what channels were found.
- Q: Is this just like a freeview box?**
A: No, it's just an aerial that plugs into back of your freeview-enabled TV, so you can have a TV anywhere in house without having to run cable all over the place. Works a treat and we can get all the usual freeview channels including digital radio in the spare bedroom.
- Q: How many channels can I receive?**
A: The number of channels you can receive will be determined by what is being broadcast in your area. Channel reception will vary from location to location based on terrain (including trees, buildings, hills and mountains). The fewer obstructions, the better your chance of receiving strong digital signals. Go to <http://dtv.gov/maps>. Enter your address for a listing of likely channels available in your area:



FC CE UK CA
Made in China